



# SPANDREL BARRIER

Fire stopping between party wall blockwork and spandrel panel

- » Up to four hours fire integrity around edge of party wall
- » Up to one hour fire integrity between the spandrel panel and blockwork
- » Use in conjunction with ARC T-Barrier vertically to create an effective edge seal around the party wall cavity
- » Zero U-value can be achieved
- » Reduces thermal bypass
- » Patent protected 25531619



# SPANDREL BARRIER

## Application

ARC Spandrel Barrier seals the top of the party wall cavity, allowing a zero U-value to be achieved when used in conjunction with ARC T-Barrier vertically. Spandrel Barrier is compressed between the top of the party wall blockwork and underside of the spandrel panel, creating a fire and thermal break.

## Fire Properties

ARC Spandrel Barrier is manufactured using rockfibre mineral wool which achieves a fire classification of Euroclass A1 as defined in BS EN 13501-1.

ARC Spandrel Barrier is certificated by IFC Certification, a third-party accreditation scheme. IFC's product certifications are designed to give confidence to architects, specifiers, contractors, users, occupiers and owners that products have been thoroughly and independently evaluated and will continue to be manufactured to the same specification as originally tested.

Spandrel Barrier - IFC certificate number: IFCC 1960

Test reports, third party certification and the material datasheet are all available upon request.

## Standards

ARC Spandrel Barrier is manufactured using rockfibre mineral wool which achieves a fire classification of Euroclass A1 as defined in BS EN 13501-1. ARC's rockfibre mineral wool insulation has a thermal conductivity of 0.037W/mK.

## Dimensions

### SPB100/100 (standard)

Product Code	Party Wall Cavity Widths	Block Width	Dimensions	Pack Qty	Packs Per Pallet
SPB75/100	75mm	100mm	90/75 x 25/175 x 1200mm	12	12
SPB100/100	100mm	100mm	120/100 x 25/200 x 1200mm	12	12
SPB75/140	75mm	140mm	90/75 x 25/215 x 1200mm	12	12
SPB100/140	100mm	140mm	120/100 x 25/240 x 1200mm	12	12

### SPB100/100D (dual)

Product Code	Party Wall Cavity Widths	Block Width	Dimensions	Pack Qty	Packs Per Pallet
SPB75/100D	75mm	100mm	90/75 x 25/300 x 1200mm	12	6
SPB100/100D	100mm	100mm	120/100 x 25/300 x 1200mm	12	6
SPB75/140D	75mm	140mm	90/75 x 25/380 x 1200mm	8	6
SPB100/140D	100mm	140mm	120/100 x 25/380 x 1200mm	8	6

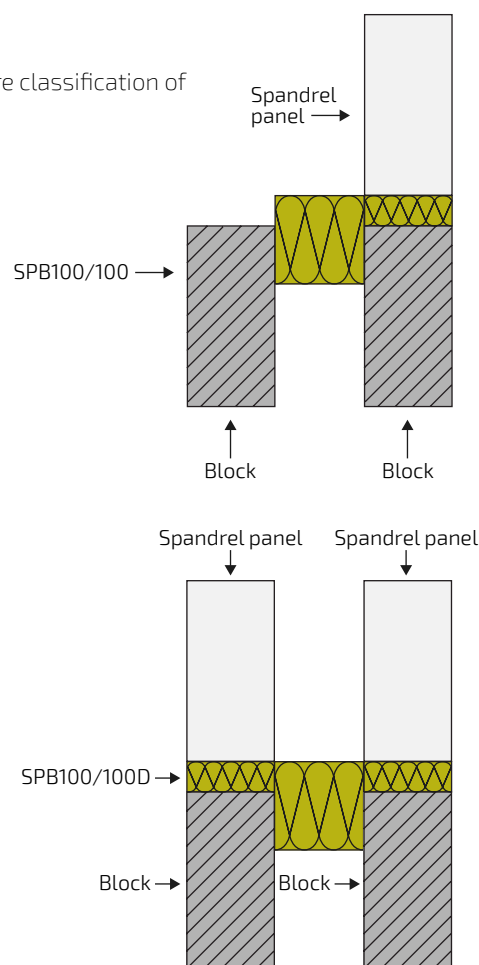
## Installation

The person installing the ARC Spandrel Barrier should first familiar themselves with this datasheet, ensuring the correct product is being fitted into the cavity.

ARC Spandrel Barrier is designed to be fitted across the top of party wall blockwork underneath a timber spandrel panel. Installation is easy, the barrier simply push fits into the top of the party wall cavity. The spandrel panel then drops on top, compressing the barrier and creating a fire and thermal break between the spandrel panel and blockwork.

Lengths of ARC Spandrel Barrier should be butted tightly together, with care taken to ensure no gaps remain.

Care should be taken when handling the product to ensure that the mineral wool isn't damaged.



# SPANDREL BARRIER

## Storage and Packaging

ARC Spandrel Barrier is supplied in polythene packs which are designed for transporting and protecting the products. It is not recommended that the packs are stored in direct sunlight. When storing the barriers for longer periods of time it is recommended that the product should be stored indoors, or under cover. Cover cavities and products at night or in bad weather.

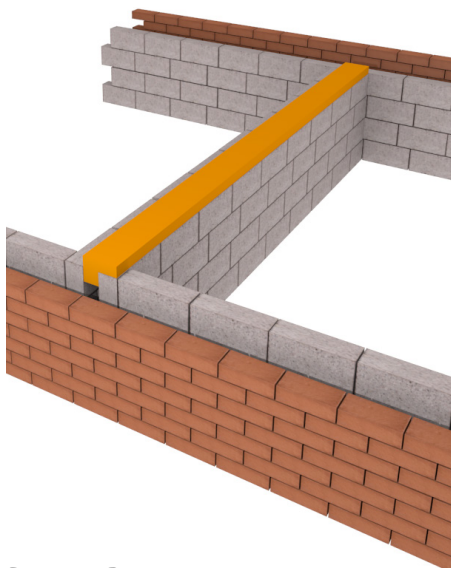
## Environment

No CFCs or HCFCs are involved in the manufacturing process of ARC's rockfibre mineral wool insulation. The material presents no known threat to the environment. ARC Spandrel Barrier has a Green Guide rating of A+.

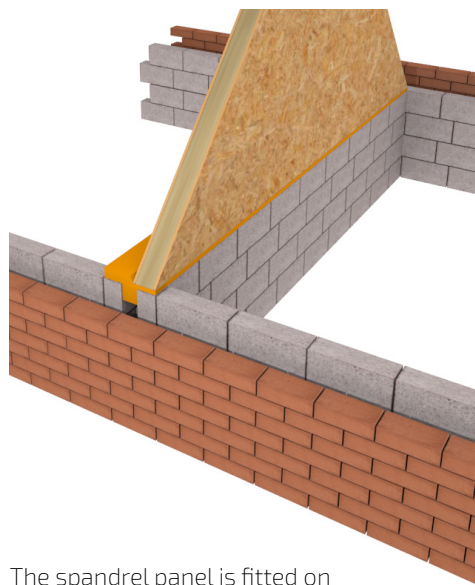
This product can be disposed of via landfill; preferably, the product should be returned to ARC Building Solutions so that the waste can be separated and recycled accordingly.

## Health and Safety

ARC Building Solutions has an approved Health and Safety Policy and is committed to working and supplying products safely. ARC's rockfibre mineral wool is not classed as a possible human carcinogen. We have assessed products as required by Substances Hazardous to Health Regulations (COSHH). An ARC Material Safety Datasheet (MSDS) is available upon request.



Spandrel Barrier is installed along the top of the party wall cavity, creating an effective edge seal.



The spandrel panel is fitted on top of the Spandrel Barrier. The Spandrel Barrier will compress and form a seal between the blockwork and spandrel panel.

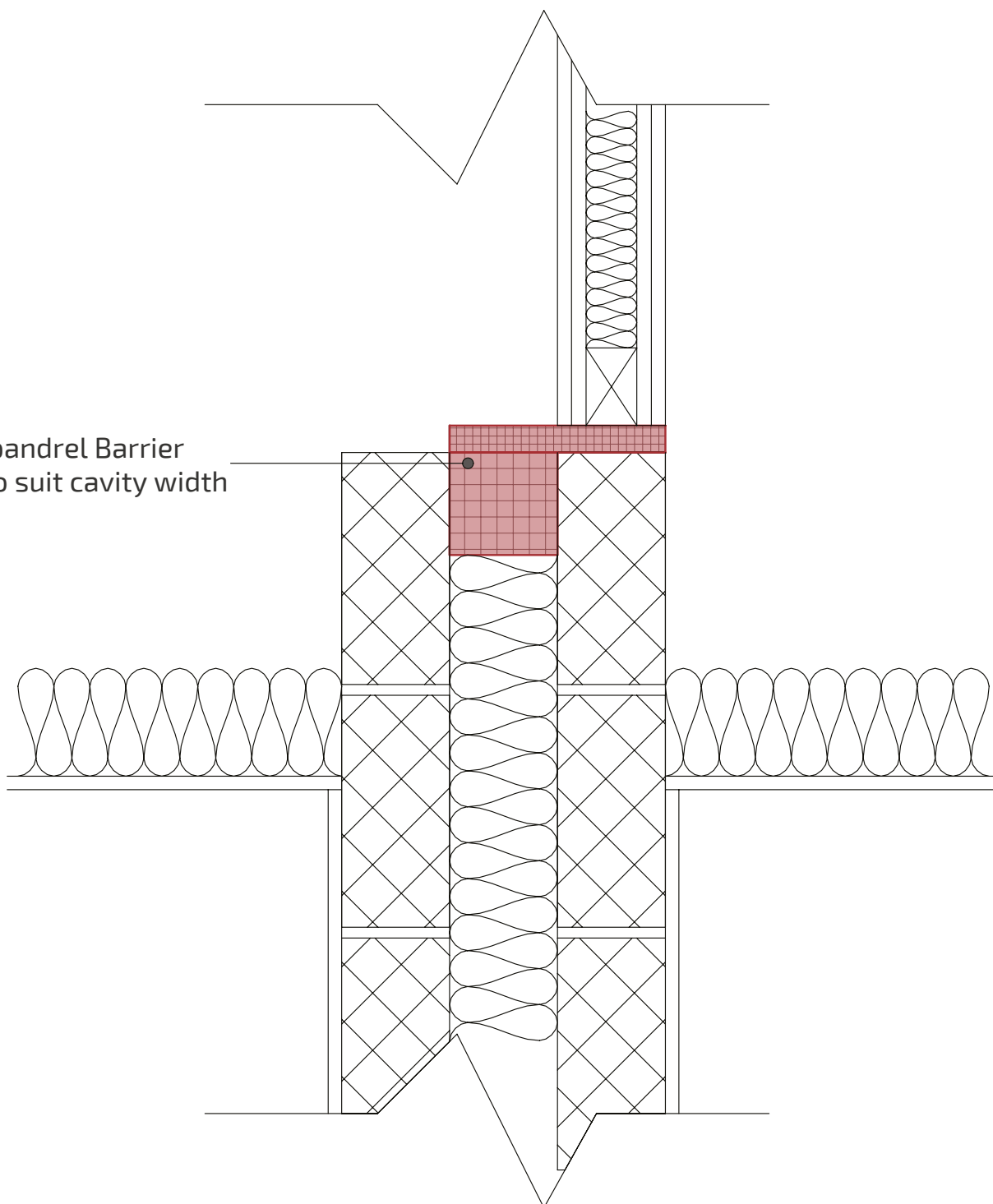
# SPANDREL BARRIER

## Typical Detail Examples

Please find a selection of detail drawings for typical details where the Spandrel Barrier has been installed.

### ARC Spandrel Barrier Section

ARC Spandrel Barrier  
- Single, to suit cavity width

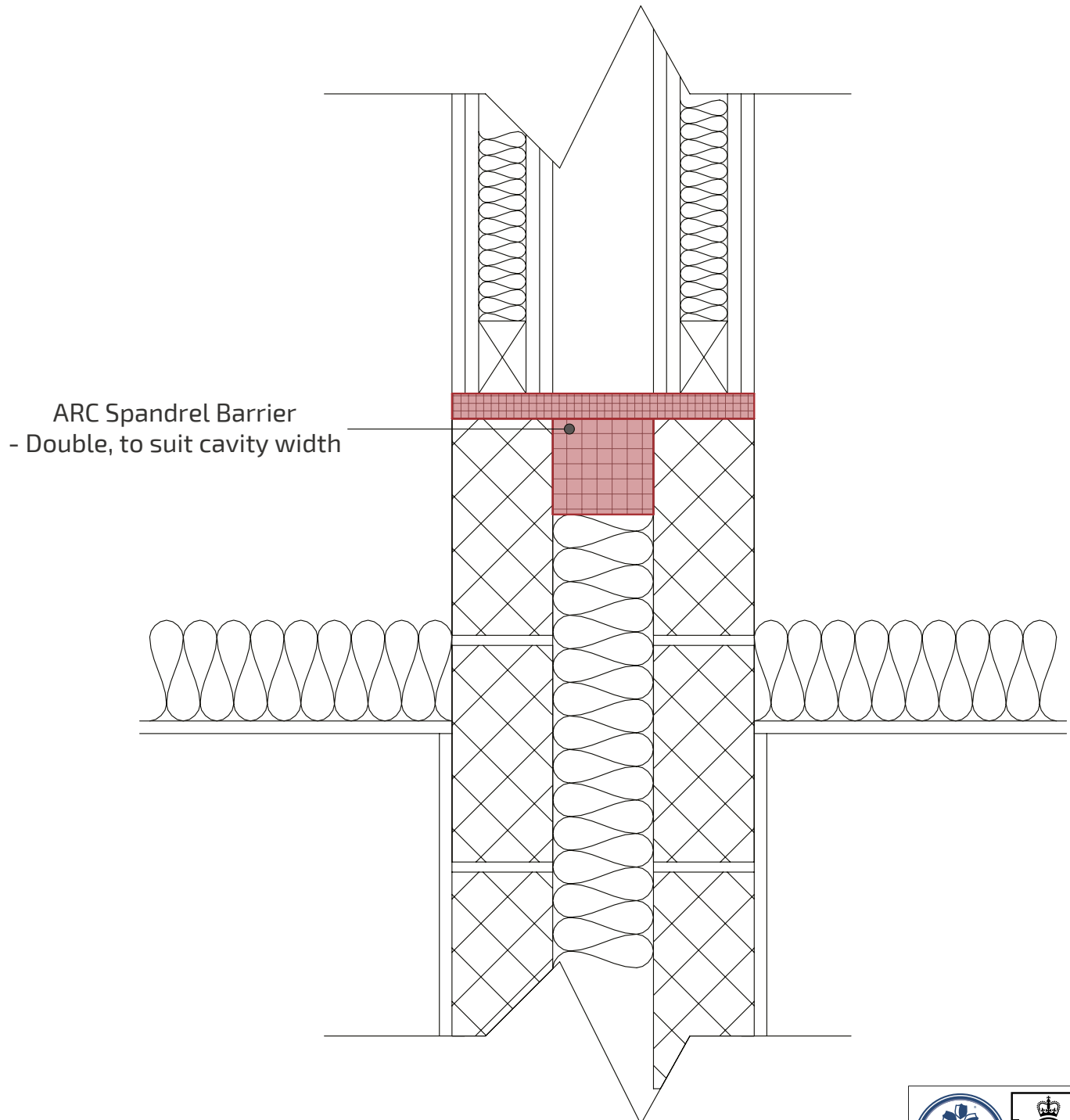


# SPANDREL BARRIER

## Typical Detail Examples

Please find a selection of detail drawings for typical details where the Spandrel Barrier has been installed.

### ARC Spandrel Barrier - Double Section



Any information provided within this document is intended for guidance only. Expert technical advice should be sought before specification or installation of any product. It is of particular importance to ensure that any fire barrier or fire stopping product is tested for use with the exact application intended. ARC Building Solutions Ltd cannot accept liability for failure where usage is outside of the standard application, including but not limited to, where deflection or distortion has allowed gaps to form around the barrier, or where the barrier is not fitted in accordance with the manufacturer's guidelines.  
© 2024 ARC Building Solutions Ltd. ARC and T-Barrier are registered trademarks of ARC Building Solutions Ltd



Certificate Number 19310  
ISO 9001, ISO 14001  
ISO 45001